

SKYSCREEN Roller Surface (SFSS)

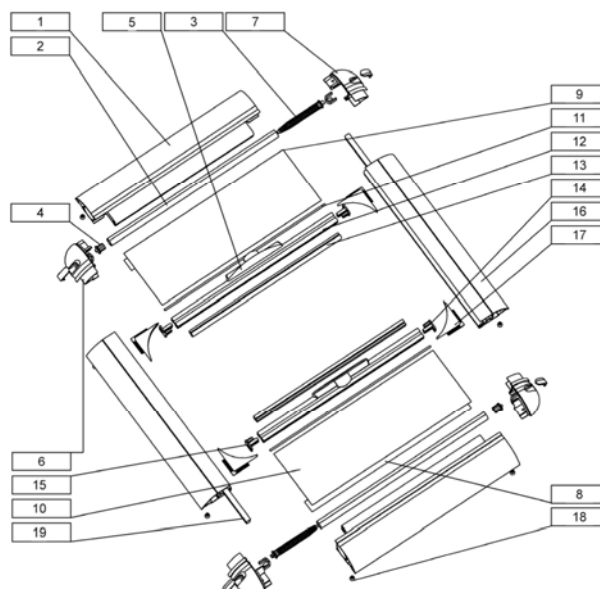
Adjusting roller tension

Parts list for:
Surface SKYscreen (SFSS)

ALL PARTS 2 OFF UNLESS OTHERWISE STATED

1	Roller cover 43143810001 (Sand) or 431438270000 (Cream)
2	Roller extrusion 10003970000
3	Roller spring 40001910000 (version A) 401223310000 (version A2) 40001890000 (version B)
4	Roller bearing
5	Handle Set = 4314059001 (Cream) or 43143940009 (Sand)
6	LH Corner moulding + LH Screw cover + LH screw cover clip
7	RH Corner moulding + RH Screw cover + RH screw cover clip Set = 43143930009 (Sand) or 43140380001 (Cream)
8	D/S tape 5002052000
9	Blackout (1 only) 10000650000
10	Flyscreen (1 only) 10104970001
11	Monofilament 4012214000 (Flyscreen) 4012213000 (Blackout)
12	Crossbar 11808760005
13	Magnet 11808600000
14	LH Crossbar end cap
15	RH Crossbar end cap Set = (to be advised)
16	Side rail 43143820001 (Sand) or 43138260000 (Cream)
17	Radius corners (4 off) R30 = 431405700001 (Cream) or 43143950009 (Sand) R40 = 43140580001 (Cream) or 43143960009 (Sand) R50 = 43140590001 (Cream) or 43143970009 (Sand)
18	Assembly screws (8 off) - (No4 x 6.0 pozi pan head) 41002970000
19	Brushstrip 11808830004

OCEANair



To adjust roller rewind tension

- 1 Place the unit on its face.
- 2 Carefully remove the liner (if fitted).
- 3 Disengage the radius corner pieces (if fitted) from the roller cover. To do this push them away from the roller cover, they can then stay fitted in the side rail.
- 4 Remove the fixing screws holding the corners of the roller cover to the side rails at the end that you are changing the roller. Do not touch the other end.
- 5 Carefully pull the roller cover assembly away from the side rails.
- 6 Locate the spring end of the roller assembly (the spring end has a metal shaft and the bearing end is all plastic) and remove the fixing screw from the corner moulding.
- 7 Slowly pull the corner out of the roller cover (being careful, as the spring will try to turn the corner when it is clear of the extrusion).
- 8 When the moulding is clear of the roller cover but with the spring rod still located in the corner moulding you can adjust the tension.
- 9 Reduce the spring tension by turning the moulding anticlockwise.
- 10 Increase the tension by turning the moulding clockwise. Note – the nominal setting when tensioning the blind from no tension is 6 turns.

SKYSCREEN Roller Surface (SFSS)

Adjusting roller tension

- 11 Slide the corner moulding back into the roller cover making sure that the pin on the other end of the roller has not disengaged from the bearing hole in the opposite corner moulding.
- 12 Push the corner into the roller cover and loosely fit the fixing screw if it tries to push out again.
- 13 Insert the crossbar into the slots in the side rails and then insert the corners into the side rails but do not refit the fixing screws at this stage.
- 14 Hold the roller cover tightly onto the side rails and operate the blind a few times to 'settle' the fabric. When checking the tension it is important to hold the screen in the same orientation as it will be when installed.
- 15 If the spring tension requires changing pull the roller assembly off the side rails and pull the spring end moulding away from the roller cover (firstly removing the fixing screw if refitted at stage 11).
- 16 Turn the corner moulding clockwise to increase the tension or anticlockwise to reduce it.
- 17 Repeat stages 6 to 13 until the required tension is achieved.
- 18 Refit and tighten all the removed screws.
- 19 Re-engage the corner radius pieces (if fitted).
- 20 Refit liner (if fitted).
- 21 Operate the blind a few times as a final check. If the spring tension is still not correct then repeat the whole procedure.